

FORM+



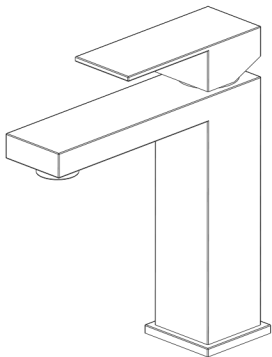
INSTRUCTION MANUAL

CASCADE | FLOW BATHROOM SINK FAUCET

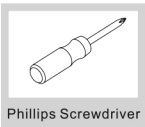
SKU: 25-CASCADEFLOW-XX

INSTALLATION MANUAL

Single Hole Bathroom Sink Faucet



Tools you will need



Phillips Screwdriver



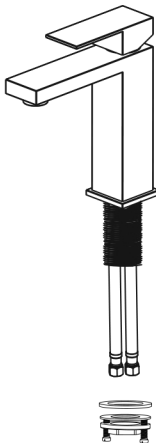
Safety Goggles



Silicone Sealant

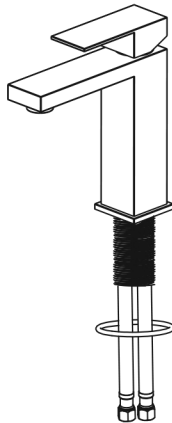


Adjustable Wrench



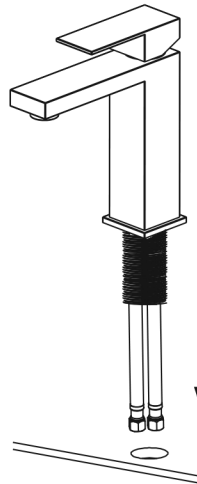
Step 1: Remove mounting hardware

Remove the mounting screws, mounting nut, and rubber & metal washer from the mounting pipe



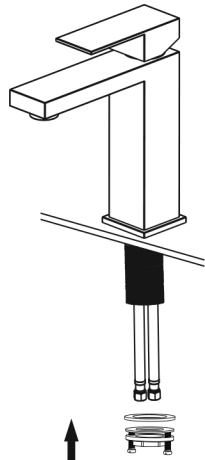
Step 2: Faucet installation

For three-hole installation: Install deck plate, base plate, and silicone sealant (optional)
For single-hole installation: Install base plate



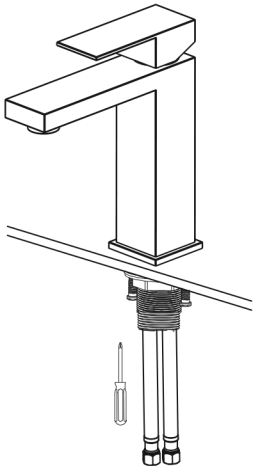
Step 3: Install faucet body

Insert faucet body into hole in countertop or deck plate
Pre-drilled hole size: 1-3/8" (min) – 1-1/2" (max)
Max countertop thickness: 1-3/8"



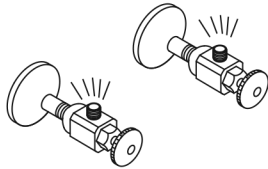
Step 4: Install mounting hardware

Install mounting hardware from underneath the countertop to the faucet



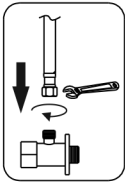
Step 5: Secure mounting hardware

Adjust direction of faucet body so that handle is on right side of faucet. Tighten mounting nut and mounting screws with Phillips screwdriver until snug



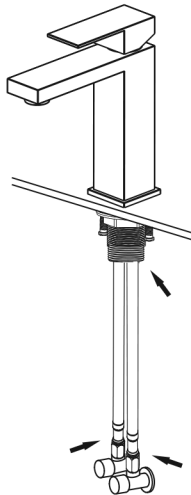
Step 6: Flush angle valves

Open the angle valves for a few seconds to flush out any dirt or debris before installation.



Step 7: Connect waterlines

Connect waterlines to angle stops. Tighten both ends of waterlines with a wrench until snug.



Step 8: Flush the body and check for leaks

Remove aerator from spout. Turn faucet on and let the water run for 60 seconds to flush any debris. Check for leaks at the connections. Retighten if necessary.

Care & Maintenance

*To keep the product clean & shining, follow the steps below:

1. Rinse with clean water & dry with a soft cloth
2. Do not clean with soap, acid polish, abrasives, or harsh cleaners
3. Do not use cloth with a coarse surface
4. Unscrew the aerator and clean when necessary



Thank You for Choosing FORM+

For additional support, please visit our
website.

www.formplusdesign.com