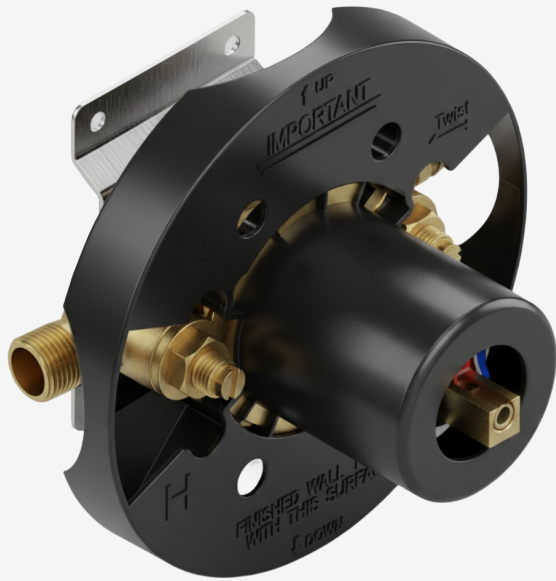


FORM+

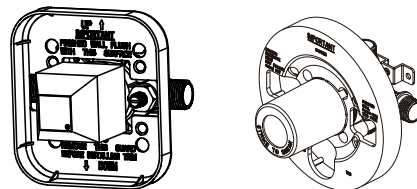


INSTRUCTION MANUAL

2-WAY VOLUME CONTROL SHOWER VALVE | 1/2" NPT INLET CONNECTIONS

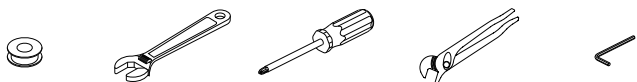
SKU: 25-0379-ND-1

ROUGH-IN BODY



For easy installation of the rough-in body, please read the instruction completely before beginning

You may need:



SHUT OFF WATER SUPPLIES BEFORE INSTALALTION.

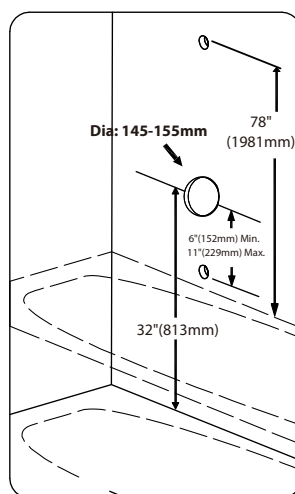
1 Installation Schematics-Measuring for the ideal Tub/Shower Performance

1.1 Tub/Shower

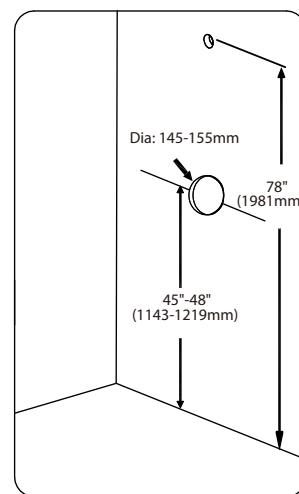
Position the valve body 32" from the floor of the tub basin. The shower arm should be placed 78" above the floor of the tub basin. The tub spout is to be no less than 6" and no greater than 11" below the valve.

1.2 Shower only

The center of the valve should be 45" to 48" above the shower stall floor. The shower arm should be placed 78" above shower stall floor.



Tub/Shower

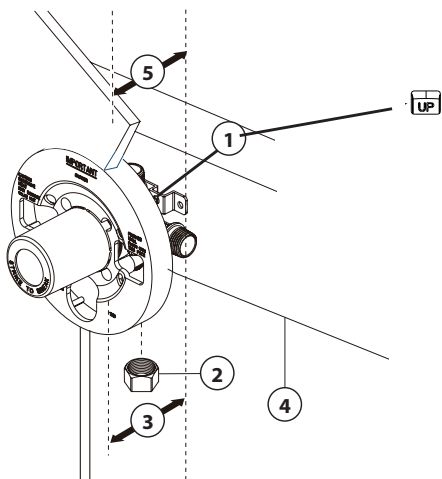


Shower only

2 Installing Your Valve

Install the valve so that the word UP is at the top (1). For shower only installation, plug bottom valve outlet with pipe plug (2)

NOTE: Distance (3) from the stringer (4) to the front of the plaster guard is the same distance to the finished wall (5). There is plaster guard attached to the valve to be used as an installation and alignment guard. The plaster guard may be left in the place until the trim is installed in order to protect the valve from possible construction damage.



3 Flush System/Check for Leaks

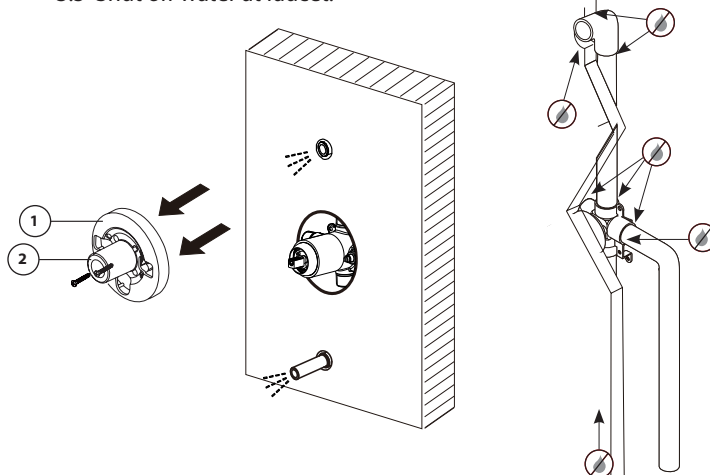
3.1 Remove and discard plasterguard (1) and connecting screws from valve body. Break the cover piece (2) off for access to the stem. Remove and discard connecting screws from valve body.

3.2 Place handle on valve stem and turn handle to full on mixed position.

3.3 Turn on hot and cold water lines to full open for one minute each.

3.4 Check for leaks.

3.5 Shut off water at faucet.



Thank You for Choosing FORM+

For additional support, please visit our
website.

www.formplusdesign.com