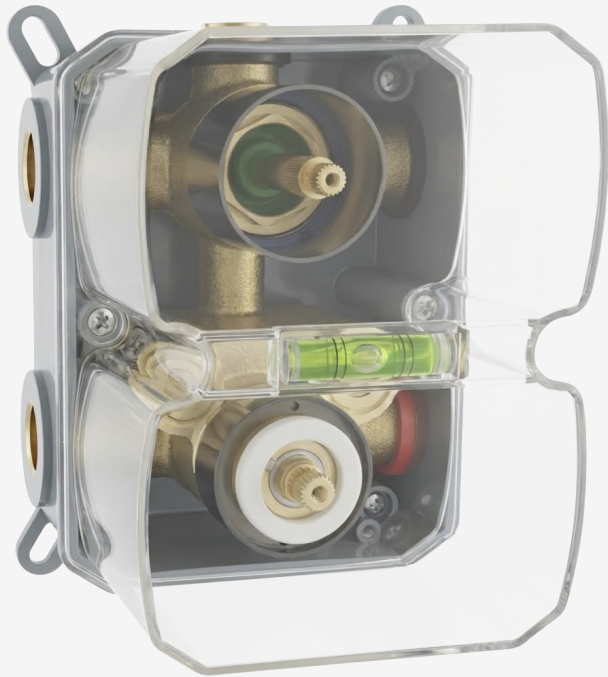


# FORM+



## THERMOSTATIC SHOWER VALVE WITH 3-WAY DIVERTER

SKU: 25-THERMOSTATIC-3W

### PRODUCT FEATURES

- + Solid brass body
- + Thermostatic valve with 3-Way diverter
- + Integrated Bubble level for easy installation
- + Built-In Integral Service Stops
- + Superior Anti-scald protection

### SPECIFICATIONS

- + 1/2" NPT Connections
- + Built-In Integral Service Stops

### DIMENSIONS

I: 5 3/4" x 4 3/4"

M: 147mm x 122mm

### AVAILABLE FINISHES

Solid Brass

### WARRANTY

Limited Lifetime Warranty

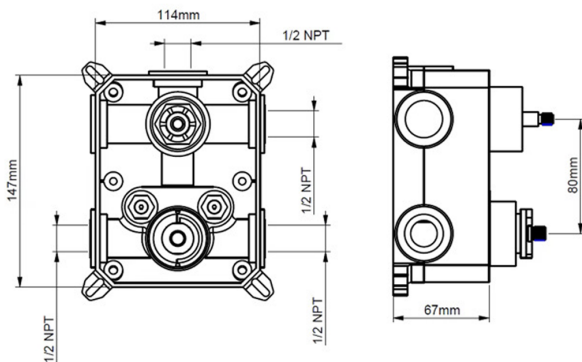
### CERTIFICATIONS

Meets or exceeds the following standards or codes:

ASME A112.18.1/CSA B125.1

+ cUPC Certified

### DIMENSION DRAWING



Form+ Design Ltd. is committed to continuous product development and improvement. As part of this commitment, we reserve the right to modify product specifications without prior notice. Technical drawing not to scale. Products that are handcrafted and hand-finished are subject to a  $\pm \frac{1}{4}$ " variance in measurement. Machined products are subject to a 3% variance in measurement.

**FORM+ Design Ltd.**

[www.formplusdesign.com](http://www.formplusdesign.com) • [info@formplusdesign.com](mailto:info@formplusdesign.com)